

# Wandsworth Health News No 43

October

2017

## Chief Executives of St George's, Kingston and Croydon hospitals call for major capital investment.

In a letter written to the Chief Executive of the beleaguered Epsom and St Helier hospital the three Chief Executives of St George's, Kingston and Croydon hospitals called for a "major capital investment" in the acute sector i.e hospitals.

This request could prove problematic.

The South West London Sustainability and Transformation Plan envisages cuts of nearly one billion pounds in the area's health services by 2022.

St George's is already seriously in debt with just

one third of the financial year gone.

With cuts in the region of one billion on the way it is hard to see how the hospital can meet its targets.

We need to step up our demand to the Government -  
**more resources for the NHS**

### Wandsworth Group Keep Our NHS Public

**Meets second Monday in the month, 7.30pm at the PCS building, Clapham Junction Station, entrance via the car park**

**All welcome**

## Massive cuts cause patient services to get worse

Despite assurances from the Trust Board the situation at St George's is getting worse.

Our NHS staff are fantastic and work all hours, many of them unpaid, to keep our hospital going, but it is an uphill task.

Important targets are not being met because of shortages

- The MRSA target for the year has already been breached
- Five of the eight cancer targets were not met in July
- The four hour turnaround target for A&E has not been met for months
- There were nine serious incidents at the hospital in August
- Harm free care is below the 95% threshold
- Ambulance turnaround performance in August was worse. The cause was the lack of available beds.

## Pressure on hospital staff gets worse

The Report on the Workforce submitted to the October meeting of the hospital Trust Board was as depressing as ever

- Vacancy rate up to 16.5%. The target figure is 10%
- Sickness rate up to 3.7%. Target rate is 3%
- Workforce decreased by 23 in August
- Trust turnover rate highest for over a year at 19.6%. The target rate is 10%.

What do these figures mean? For the hospital

staff who we rely on they must be exasperating.



There are 23 less staff and the workforce is over 16% short of what it should be

Five people trying to do the work of six No wonder waits are getting longer and mistakes are being made.

The high Trust turnover rate of nearly 20% means that

one in five staff come and then go.

Those that leave are often the more experienced looking for a better job.

So the skill mix at the hospital declines.

The single biggest loss of days through sickness is caused by anxiety.

Staff are being pressurised to do the impossible.

The Annual NHS Staff Survey showed that bullying at St George's was widespread.

# St George's in dire straights over finances

The financial situation at the hospital goes from bad to worse.

The Trust Board do nothing to alert the public to the dangers the hospital faces.

If a serious injection of cash is no forthcoming the hospital is likely to go under.

At the start of the current financial year the board was predicting that the hospital would end the year £28.5 million overdrawn.

This figure was soon revised upward to £45 million in discussions with NHS Improvement.

The latest set of monthly figures make even the later target of £45 million overdrawn an impossibility.

By the end of August, with seven months of the

financial year still to go the hospital was almost £34 million over budget.

The plain fact is St George's, like every other NHS hospital, is being seriously underfunded.



It needs more money.

Without it more targets will be missed, patients will wait longer for appointments, more operations will be cancelled, and frustrated staff, particularly the more skilled, will leave.

With the onset of winter and a warning already given that the hospital is

not prepared for an influx of patients, our local hospital could be overwhelmed.

The September Trust Board meeting gave notice that there are simply not enough spare beds available.

The Trust Board and more particularly the Council of Governors should make the public aware

that St George's is facing a real crisis this winter.

Nothing can be gained by keeping this a secret.

The NHS is being systematically underfunded and St George's is just one of many NHS hospitals that are feeling the pinch.



**For more information on the fightback to save our NHS from cuts and privatisation**

[www.keepournhspublic.com](http://www.keepournhspublic.com)

# Why can you only see a GP for 10 minutes ?

GPs are so tied up with the bureaucracy of the NHS that they have less and less time to see patients.

This bureaucracy has been created by having a market in the NHS. One part of the service, GPs, have to buy services from hospitals. This is called the purchaser provider split and was introduced in 1990 as the brainchild of Margaret Thatcher.

It allowed private companies to move in to the NHS and bid for

services that were previously performed by NHS staff.

The market in the NHS has proved a disaster. Billions are now being spent on the apparatus of the market. GPs have to spend time employing people to send invoices to hospitals, the invoices have to be checked and money transferred

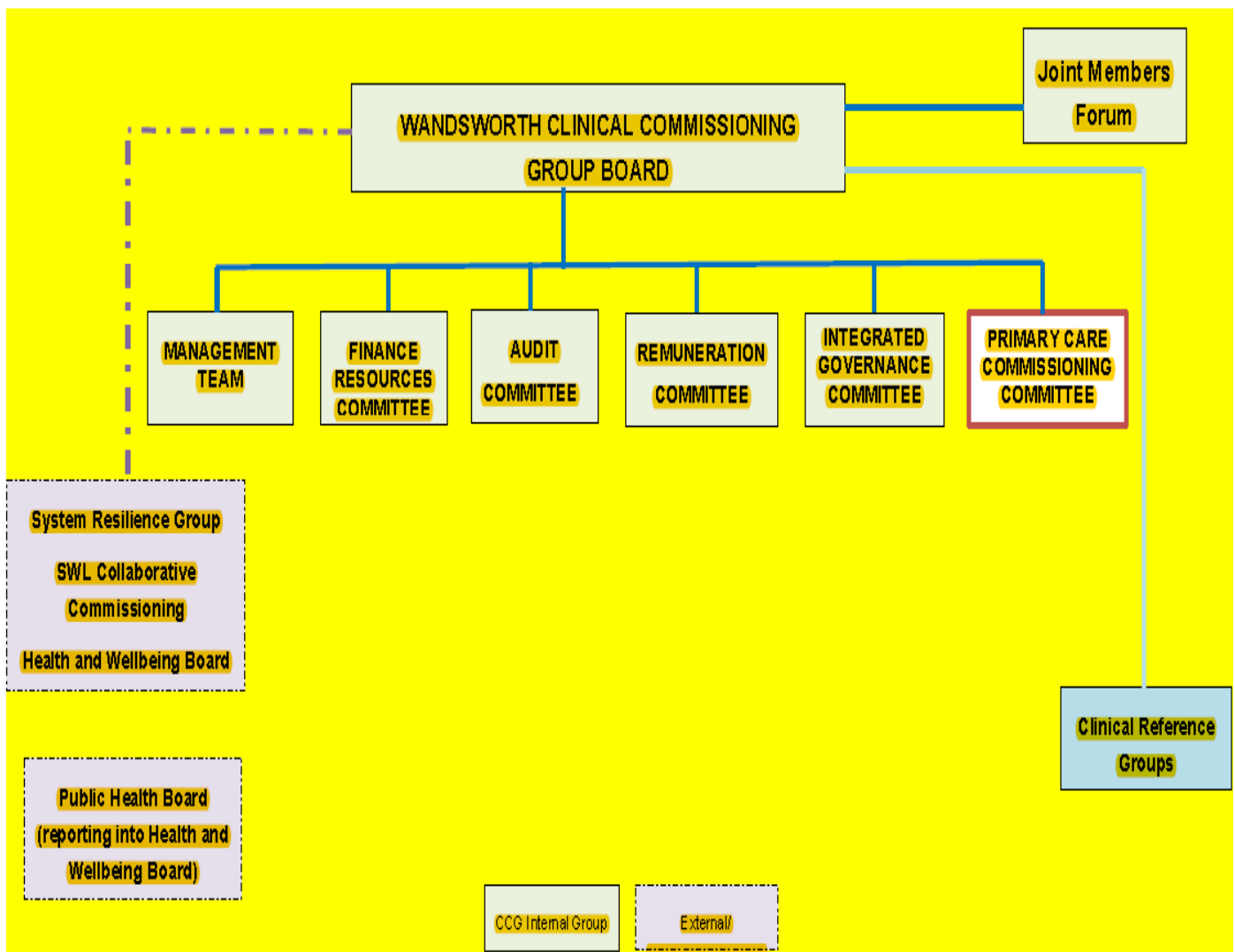
All very costly and time consuming.

It has been estimated that billions could be saved if the NHS market was abolished.

Below is a chart from the October Clinical Commissioning Group papers that were looked at by the CCG Trust Board

It gives an indication of just where doctor's time is being spent - on the numerous committees that have been created just to service the market bureaucracy

## Proposed Reporting Structure of the Primary Care Commissioning Committee



## Health challenges affecting Londoners

- One-year **cancer survival rates** vary significantly across London, Londoners don't know how to spot the signs and symptoms of cancer and screening uptake is low
- Children and young people in London have **higher levels of mortality and serious illness** and higher levels of **childhood obesity** than any other global city
- People with severe mental illness **die 17 years earlier** than the general population
- **Only 14%** of Londoners get the support they need in a mental health crisis
- London has the **highest demand** for child and adult mental health services in the country
- People who are homeless have a life expectancy of only **43-47 years**, are more afflicted with mental ill health and are very high users of hospital services
- **Three quarters of Londoners** with several long term conditions say each condition is treated separately rather than holistically
- More than half of adults in London are **overweight or obese** and 1.8 million adult Londoners report they do less than 30 minutes moderately intense physical activity each week
- **Only 50 per cent** of Londoners think it's easy to access GP services
- **500 lives** could be saved if weekend care were the same as during the week
- Patients are still defaulting to A&E due to **confusion** in the current system
- NHS organisations in London **can't share** patient records across artificial geographical boundaries
- Many qualified professionals **leave London** for a number of reasons including the high cost of living

**These are the challenges affecting Londoners.**

**What are Wandsworth CCG Trust Board going to do about it ?**

**CUT the South West London health budget by nearly One Billion by 2022**

## Wandsworth CCG finances going the same way as St George's

Despite confident predictions that the CCG is likely to meet its financial obligations the small print doesn't look so good.

The Finance Report to the October CCG Board meeting revealed that over £6million to date had been overspent on hospital services-half of this to St George's.

Savings of £14 million by the end of the financial year was described in the report as 'a huge challenge'

What was even more telling was , 'we have no reserves left to mitigate against spillage or non delivery'.



## Defend Our Sexual Health Service

Funding for the Sexual Health Clinic at St George's has been withdrawn by Wandsworth Council.

Instead two temporary replacement clinics will be run at Balham Health Centre and Queen Mary's Hospital in Roehampton.

There will be 30% less staff, less space and shorter opening hours, and



at Balham less of the privacy essential to the service.

Fourteen doctors and sexual health experts from St George's said 'the new service was unsafe, unworkable and unsustainable'.

Facebook pages:Health Cuts Alert and @southwestkonhsp

## Wandsworth Health News

What's happening in our local NHS

Comments, criticisms, information, feedback

[drmikesquires@gmail.com](mailto:drmikesquires@gmail.com)

<https://mikesquireswandsworthhealthnews.wordpress.com/>