

Wandsworth Health News

January

No 49

What NHS Services In Wandsworth Have Been Recently Privatised ?

The leadership of Wandsworth Clinical Commissioning Group since its formation in 2012 has always been gung ho for privatisation.

Many of the services in the borough previously provided by the NHS have now been taken over by private companies.

Not that you would know it of course. Many of these profit seeking enterprises are allowed to camouflage themselves behind the NHS logo.

One obvious example is the Junction Health Centre at the back of Clapham Junction station. Wandsworth CCG pays over a million pounds a year to Care UK, to run the surgery.

Care UK also run the out of hours service for London and the South East.

Diabetic patients in Wandsworth were recently

informed that their foot care was no longer being provided by the NHS but by Wandsworth Healthshare.

On further inspection it transpires that Healthshare is a private company based in Kent that has been scooping up podiatry services all over the country.

Community podiatry services previously provided by hospitals, or in health centres are now being taken over by the private section.

Healthshare wherever it wins the contract renames the services after the town or area in question. The company runs community podiatry services in Hull under the name of Hull Healthshare.

Get the picture !

The company has little to do with sharing and everything to do with making a profit for their shareholders out of healthcare.

A newcomer to private provision is the homely sounding Doctorlink.

Wandsworth CCG pays over half a million of tax payers money to this private company.

Doctorlink has backing from the giant global investment company, Fidelity.

It claims to diagnose health problems over the phone or via the computer and therefore save visits to the GP.

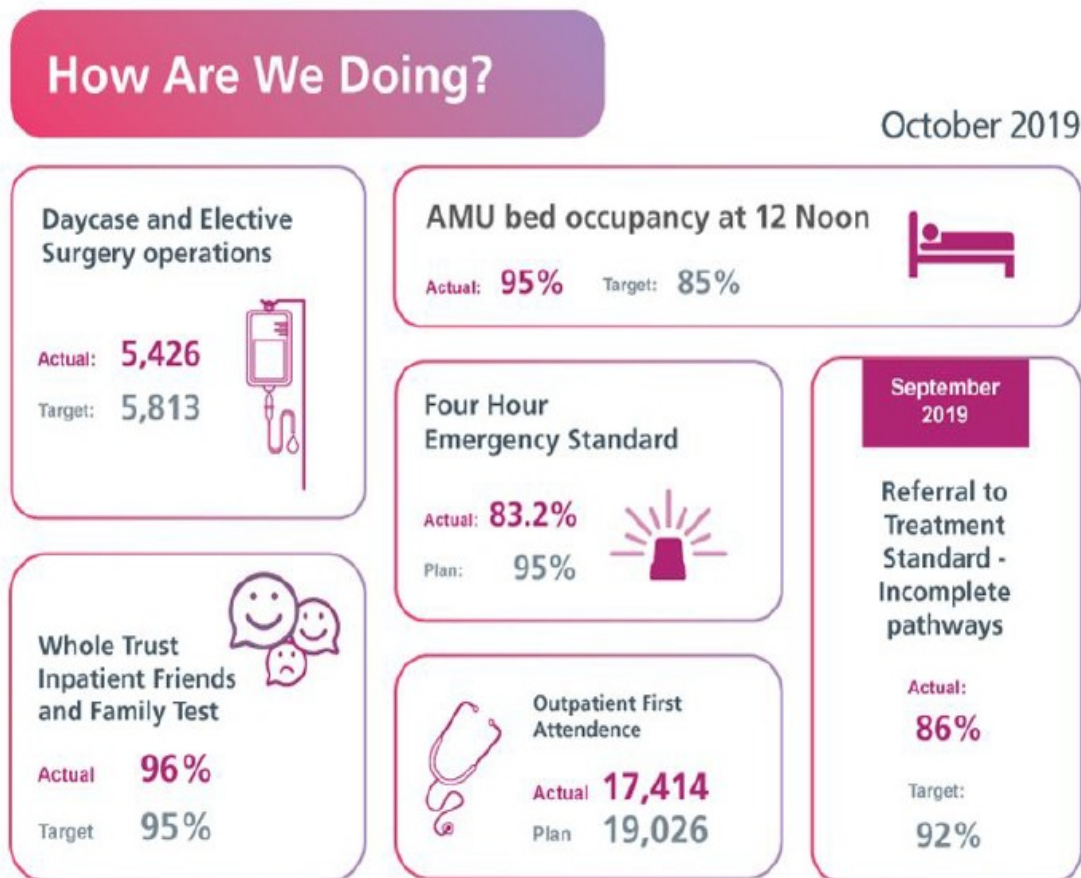
In the process the company harvests as much data as it can about you.

In the event that the NHS is finally destroyed and our healthcare, as in the United States, is taken over by insurance companies, this data will be very useful to them particularly in deciding who to insure and how much to charge

News from St George's Hospital Trust Board meeting on 28 November 2019

The 'How are we doing' figures below taken from the recent Trust Board meeting appear to show -not very well.

Our Outcomes



Despite assurances at previous Trust Board meetings that the 4 hour emergency turnover would be a high priority, and under the special watch of the CEO, not much change seems to have happened.

The 4 hour target seems as far away as ever.

Shortages of staff, beds, resources and the near exhaustion of the ambulance service seem to be at the heart of the problem

Ambulance handover times are still off target due to the lack of beds and there has been an increase in the number of patients waiting for an hour or more in an ambulance before that can be transferred to hospital.

Crisis in Ambulance Handover Times at St George's

Just how serious the crisis in the London Ambulance Service has become can be seen by the figures below.

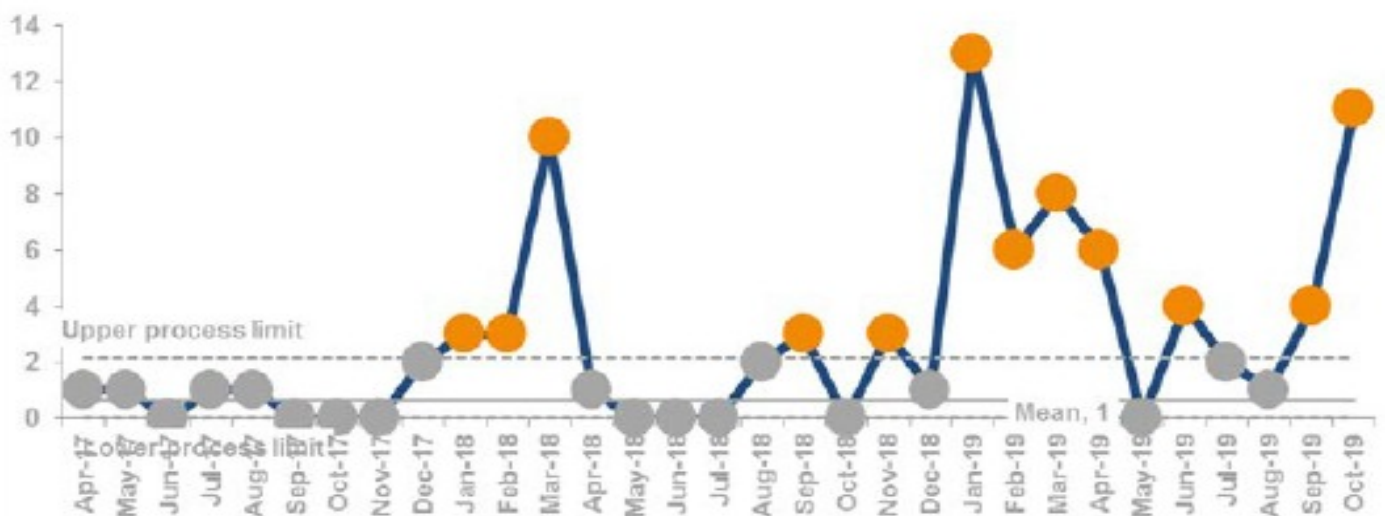
Even before the start of the usual winter crisis,

ambulance handover times have gotten worse.

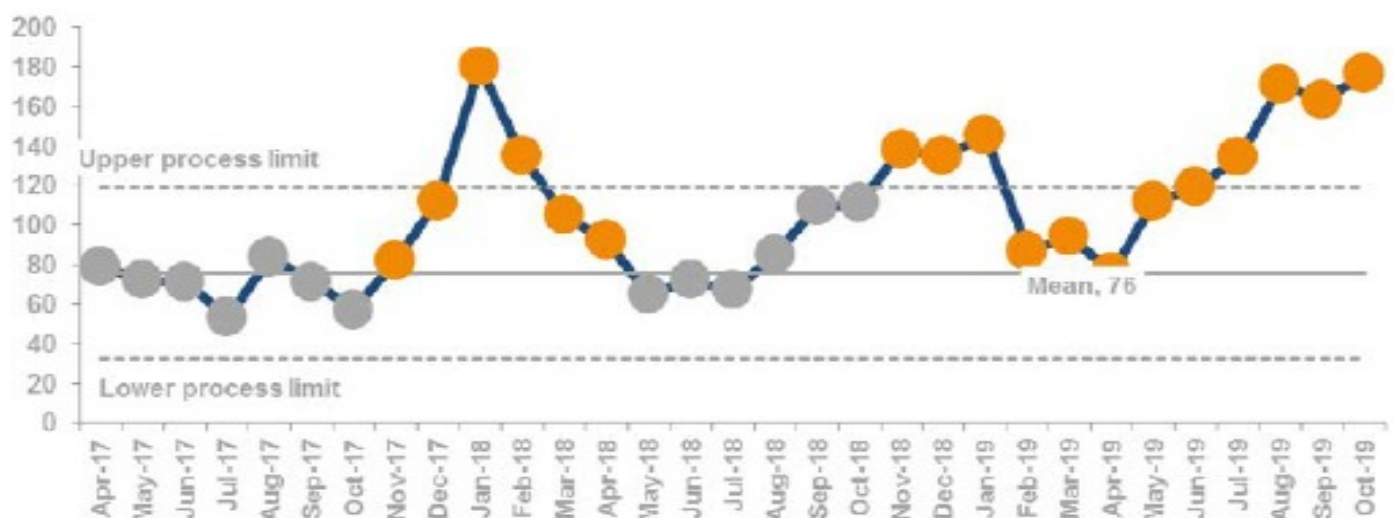
The number of patients not handed over within thirty minutes of hospital arrival is at an all time high.

Those waiting in an ambulance for treatment for over an hour looks set to beat all records

Ambulance Handover - number over 60 minutes



Ambulance Handover - number of patients not handed over within 30 minutes



NHS Wandsworth Clinical Commissioning Group will lose -£245,000,000 in funding by 2023

Patients in Wandsworth will suffer an annual under funding of £245,000,000 by 2023 because of Conservative cuts.

That is the calculation drawn up by *Keep Our NHS Public*. The figure was arrived at by

looking at past present and future funding.

For more information see:

<https://www.nhscuts.org.uk/>

These cuts are equivalent to the cost of either:

2000 GPs

6900 Nurses

130 GP Surgeries

220 MRI Machines

Springfield Hospital Wards Set To Move To Tolworth

Rumour has it that over the next few years most of the wards and units at Springfield Hospital at Tooting Bec will be moved to the Tolworth site.

Most of the wards, apart from 1,2 and 3 will move.

Just Building 30 will remain. This houses the Lotus Assessment Unit.

The two main unions at Springfield, Unison and Unite are not happy with the move but will try and negotiate the best deal possible for their members.

As readers will know much of the Springfield site has been sold off to developers.

At present it has been described by one worker

there as 'one huge building site'

Can't be very pleasant for the mental health patients and staff who work there.

And it doesn't bode well for future Wandsworth residents who need mental health care.

Why was St George's taken out of special measures?

The St George's Trust Board announced on the hospital website on 18 December that the Care Quality Commission had recommended that the Trust be taken out of special measures for quality of services.

This must have come as a surprise to the Board given the situation at the hospital.

Here is a list of the failings that the CQC overlooked:

- The A&E 4 hour target has gone from bad to worse. Despite the claim earlier in the year that the CEO attendance at A&E meetings would improve matters the turnaround time breaches have slumped from 83.2% in October to 79.4% in November.
- The Acute Medical Unit occupancy rate target of 85% is being breached and was 9% higher than last year.
- Ambulance hand over times remain below the lower control limit and are worse than the London average.
- Nine patients in November waited over 12 hours in A&E before they were discharged or admitted.
- Nearly 50,000 patients at the hospital are waiting for treatment after being referred by their GP.
- Staff turnover is still high at 17.78% and up 1% on last year.
- Between July and September 19 concerns were raised with the Trust Guardian, of these 15 related to the continual problem of bullying and 4 to patient safety.
- Finance . This just doesn't get any better. It is a question of borrowing more money to meet targets.
- A loan from NHS Improvement of £48.7 Million due to be paid back in 2019 has now been rescheduled to March 2020
- Another loan of £15 million due to be repaid in March has now be rescheduled to September.
- These loans incur interest charges.

How the Trust Board managed to convince the Care Quality Commission that the hospital should come out of special measures is beyond me.

Wandsworth Health News

Editor Mike Squires

All criticisms, comments and especially with information contact

Mike at: [:drmikesquires@gmail.com](mailto:drmikesquires@gmail.com)

Wandsworth Group

Keep Our NHS Public

Meets second Monday in the month at the PCS building by Clapham Junction Station, 7.30pm

All welcome